



0151-525-0843



admin.office@gwlady'sstreet.com



@Gwlady'sStPrim



www.gwlady'sstreet.org

Message from the Head Teacher

Dear parents/carers,

What a lovely week it has been. The children have been enjoying the sunshine, playing outside and exploring outdoor learning opportunities. Thank you to those parents/carers who attended our transition meetings over the past two weeks and our parent/toddler group and coffee afternoon.

Sadly, it is the one year anniversary of our pupil who passed away at the weekend. He is always in our thoughts but we are looking forward to seeing his mum at our Y6 Leaver's Assembly on the 18th July at 9.30am. Finally, Y6 are going to Barnstondale residential centre on Monday 27th June - we hope that the weather is good and that you have an amazing time!

Have a great weekend everyone!

Ms Booth



Family Support
Our Calm Central team is here to offer you support about any concerns or issues.



Year 6 children will be heading off to Barnstondale on a two night residential on Monday. Watch this space to find out what adventures they had.

Keep us updated:

Please let the office know if there are any changes in your contact details (phone numbers, emails)

We require 3 different contact numbers please.



Please click [here](#) to view term dates for the school year.

SEN

If you have any SEN queries please arrange to speak with Mrs Berry.



HOLIDAYS IN TERM TIME

Why you should not take your child on holiday in term time.

Your child may:

- **Get behind in their school work.**
- **Feel excluded from their group of friends on their return.**
- **Not understand new work and lose self confidence.**
- **Get lower results in tests, assessments because of missed work.**
- **Miss tests or assessments.**

Any absence in term time destroys the continuity of your child's education and may reduce chances of success.

Is my child entitled to time off school for family holidays?

No. Parents/carers do not have the right for their child to have leave of absence for a holiday.

Are parents responsible for their child's attendance at school?

Yes, by law, parents whose children are registered at a school, are responsible for ensuring that their child attends school regularly. If they fail to do this they may be guilty of an offense and can be issued or prosecuted under section 444 of the Education Act 1996 with a penalty notice.

What are the penalties?





A Fixed Penalty Notice is a fine of £120 issued to each parent of each child absent on holiday.

Attendance Matters

Whole School Target: 97% - This week's Whole school attendance: 90.23%

Absence—if your child is absent from school you **MUST** contact the school before 9:00am each day of your child's absence. Failure to make any contact with the school will result in a home visit from staff and Head teacher.

Appointments—should be arranged outside of the school day and if this is not possible, medical evidence should be provided.

<u>Class</u>	<u>Attendance %</u>	<u>Position</u>
Costa Rica	96.92%	
Butterflies	95.24%	
Germany	94.23%	
China	93.79%	
India	92.69%	5th
Russia	92.31%	6th
New Zealand	92.14%	7th
Chile	90.71%	8th
Japan	90%	9th
Australia	90%	9th
Kenya	90%	9th
Morocco	86.09%	12th
Caterpillars	85.5%	13th
France	83.46%	14th
Ladybirds	80.95%	15th



**Congratulations
to our weekly 100%
attendance winners.**

Caterpillars	Gabor H
Ladybirds	Riley HS
Butterflies	Eram A
France	Buddy B
Germany	Maddison-Mae J
Australia	Oskar D
New Zealand	Ella K
Kenya	Jack C
Morroco	Lola A
Chile	Sonny W
Costa Rica	Ruby Mc
India	Alin M
Russia	Alexis G
China	Emily N
Japan	Kyle L

Congratulations to Class Butterflies and Class Costa Rica who are our Attendance winners again this week. The children will all receive a Golden time activity.

Well done!



Perfect Attendance!





Our Whole School Weekly Attendance Board

	Weekly beginning 23 rd May 2022				Week beginning 6 th June 2022				Week beginning 17 th June 2022				Week beginning 20 th June 2022			
Caterpillars		87.78			84.83								85.5			
Ladybirds		86.11			86				87.62				80.95			
Butterflies			92.22			93.14			89.52							95.24
France		86.75			89.23					90.38			83.46			
Germany	81.48					91.6				90.77				94.23		
Australia	88.10				88.93									90		
New Zealand			90.42			94.64				93.57				92.14		
Kenya	72.86			96.76	89.17				89.17					90		
Morocco						93.04			88.70				86.09			
Chile			90.48		85					93.21				90.71		
Costa Rica	80.66				88.46							96.92				96.92
India				96.15				98.08		90				92.69		
Russia		86.75						95.77		93.85				92.31		
China		89.66						95.17				98.97		93.79		
Japan		88.49						97.14				96.07		90		
Attendance Percentage	80+	85+	90+	95+	80+	85+	90+	95+	80+	85+	90+	95+	80+	85+	90+	95+





PIC•COLLAGE

We've had another lovely toddler session this week.

It was lovely to see new faces and watch the little ones engaged in the fun activities.

Parent and toddler sessions will be held every Wednesday morning 9-10 am

Please feel free to attend these sessions with your little ones.

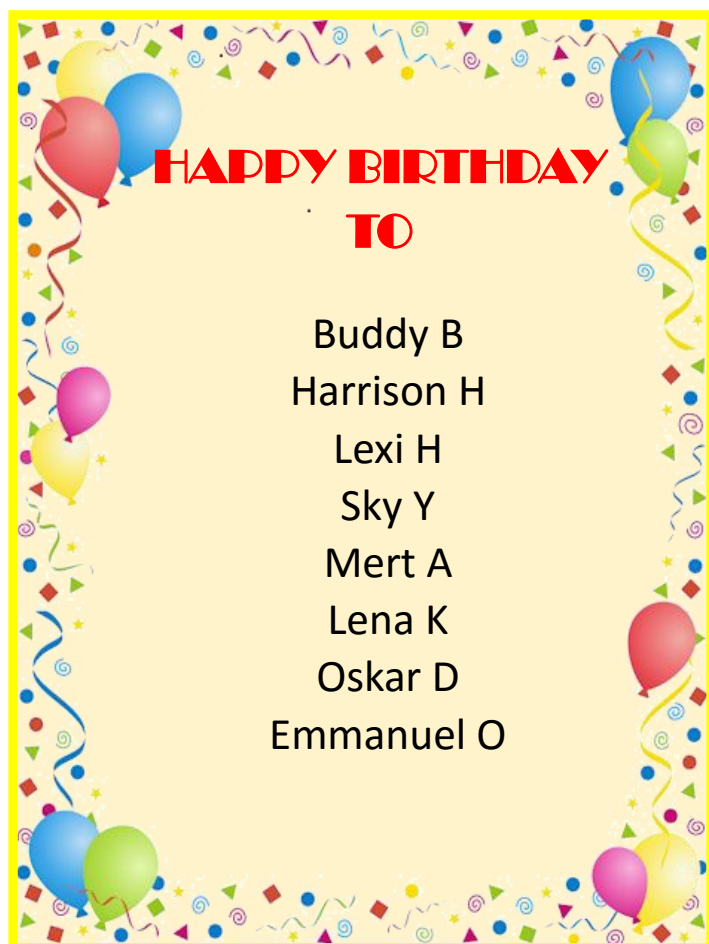


Fare Share food is available every Wednesday at our toddler group or coffee afternoon. Please remember to bring a carrier bag.



Fancy a chat or want to meet new friends?

Join us every Wednesday from 2.30pm in the Breakfast room for coffee, cake and a chat



Worried about a child or young person?

If a child or young person is
at risk of harm, abuse or
neglect please report it to :

CARELINE
Call 0151 233 3700



After School Clubs

	Monday	Tuesday	Wednesday	Thursday	Friday
Reception				Multi Sports	
Year 1					
Year 2				Gardening	
Year 3	Multi Sports				
Year 4					
Year 5			Football		
Year 6					

MENU FOR WB 27th JUNE

FOOD
FOR
THOUGHT

Primary Lunch Menu



Week Commencing 27/06/22

Week 4	Monday	Tuesday	Wednesday	Thursday	Friday
Main Meal We provide a variety of seasonal hot and cold dishes for children to freely choose from Alternative Jacket potatoes with tuna and other fillings available daily	Halal Chicken Burger served with Seasoned Wedges and Sweetcorn Vegan Vegetable Burgers served wedges and Sweetcorn	Homemade Sausage and Mashed Potato with Onion Gravy, Peas, Vegan Sausage and Mashed Potato with Onion Gravy, Peas,	Halal Roast Chicken Dinner With Roast Potatoes and Seasonal Vegetables Vegan sliced Ham Roast potatoes and Seasonal Vegetables	Fish Fingers, Chips and Beans Vegan Fishless Fingers, Chips and Beans	Spanish Day Chicken Paella Spanish Omelette
Salad Pots and Pasta Pots					
Starchy Food Various bread choices available	Potato Wedges	Mashed Potato	Roast Potato	Chips	Rice
Vegetables Salad Bar with Hummus	Sweetcorn	Peas	Seasonal Vegetables	Baked Beans	Peppers
Dessert Fresh fruit, selection of low-fat yoghurts and homemade puddings available every lunch time	School Cake Fresh Fruit	Cherry Bakewell Slice served with Custard Fresh Fruit	Fresh Fruit Jelly Yoghurts	Carrot Cake Fresh Fruit	Choc Ice Mixed Flavour Yoghurts

School meals:

All children in year 2 currently receive free school meals from the Government. When your child moves into the next school year, Year 3, you will be charged £2 per day for them to have a school meal. If you are in receipt of certain benefits or on a low income you may be entitled to Free school meals from the Local Authority.

Use the link attached to check if you are eligible for free school meals. Please apply NOW so it is in place before your child starts Year 3. This benefit can not be back dated so any charges made, you will be responsible for paying.

<https://liverpool.gov.uk/benefits/free-school->

Free
School
Meals



Are you entitled?



Star of the Week

Class

Caterpillars 1
Caterpillars 2
Butterflies
Ladybirds
France
Germany
Australia
New Zealand
Kenya
Morocco
Chile
Costa Rica
India
Russia
China
Japan

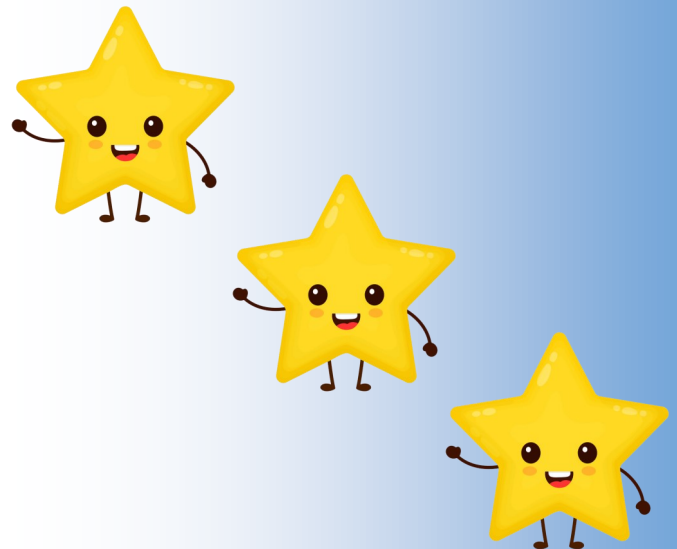
Name

Serah S
Jack L
Willow H
Leo C
Sky Y
Logan S
James M
Lovinia-Rose J
Lily-May H
Jaida H
Druh RD
Alexandra N
Bridgette A
Daisy-Lea A
Joseph H
Lola S

Well done to our
wonderful

STARS OF THE WEEK

Your hard work and
efforts have not gone
unnoticed.





Look at the wonderful week Year 5 have had.



“Year 5 have enjoyed an exciting week this week. We had a very special visit from ‘Your Edge Training’ who held first aid workshops in both classes. We learned what to do if someone falls ill and what steps we can do to help them. We learned how to perform CPR and how to put someone in the recovery position. Two vital life skills that may save a life one day. We also had our brilliant P.E session this week ran by LFC, which was great

School Uniform

Uniform:

Children **MUST** come to school in full school uniform each day. Royal blue jumper/cardigan, white shirt and grey trousers/skirt black shoes (not trainers)

PE kit white t shirt , royal blue shorts , royal blue jogging bottoms optional.

These items can all be purchased from school or local supermarkets. If you have difficulty providing any of these please contact the office.



**FROM MONDAY 6TH JUNE
ALL CHILDREN WILL NEED
TO BRING THEIR PE KIT,
PUMPS OR TRAINERS INTO
SCHOOL IN A BAG ON
THEIR CLASSES PE DAY.
ONLY SCHOOL PE KITS OR
WHITE T-SHIRT AND BLUE
SHORTS ARE TO BE WORN.**



PE TIMETABLE

Monday:

Tuesday:

Wednesday: Year 2(Australia), Year 4 , Year 5

Thursday: Year 2 (New Zealand)

Friday: FS2 , Year 1, Year 3, Year 6

UNIFORM ORDERS

The closing date for uniform orders has now closed.

**Any uniform orders placed after 26th May can not be
guaranteed delivery for the end of term in July.**