

Gwladys Street CP & Nursery School



News Letter 26th January 2024



0151-525-0843



admin.office@gwladysstreet.com



@GwladysStPrim



www.gwladysstreet.or

MESSAGE FROM THE HEAD TEACHER

Dear parents/carers,

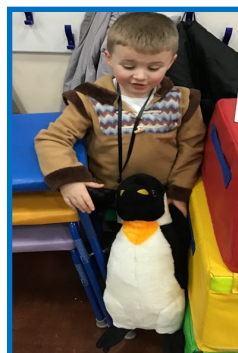
It has been another busy week and our Y5 and Y6 children have been out and about with their bikes learning all about road safety through our 'Bikeability' programme. I received some wonderful feedback from Spellow Lane Library who led a number of story sessions across school. After the sessions, I received a lovely email, praising the children for their listening skills and behaviour. A big thanks to Spellow Lane Library for all that you do for us.

On Thursday, the 'big freeze' hit Y1 as pupils had their 'Arctic Immersion Day'. They looked amazing and learnt so much about their topic.

A big thank you to the parents/carers who attended Japan's class assembly on Monday and to the parents/carers who attended the number workshop for pupils in Mrs Cockbain's class on Tuesday and Nursery on Wednesday.

Have a lovely weekend and we look forward to seeing you next week.

Best wishes, Ms Booth.



[Click here to view](#)

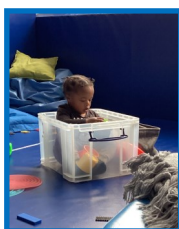
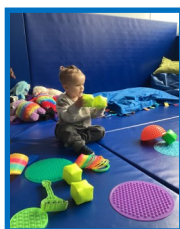
Free School Meals
Are you entitled?

[Apply Here](#)



Parent and toddler sessions will be held every **Wednesday morning 9 -10 am**

Please feel free to attend these sessions with your little ones.



Please remember that our coffee afternoons are every Wednesday from 2:30pm. Come along and join school staff and other parents in a friendly environment.

Please click [here](#) to view term dates for the school year.



SCHOOL UNIFORM

Uniform is an important part of the school's identity and therefore our uniform policy must be adhered to unless there are special circumstances like non-uniform days. Please see our school website on this policy to clarify our expectations for students and parents. If you are unsure if a piece of uniform is acceptable, please consult school. School tracksuits are for Early Years Children and PE. PE kits to be worn on designated PE days.



SCHOOL UNIFORM



Full school uniform must be worn every day.

Please make sure it has your CHILD'S NAME in.

Nursery (F1)

pupil's uniform will be:

- Royal blue jogging suit consisting of round neck jumper and royal blue jogging bottoms.
- White polo shirt.
- Velcro black shoes with black soles.



Reception (F2)

pupil's uniform will be:

- Royal blue jogging suit consisting of round neck jumper and royal blue jogging bottoms.
- White polo shirt.
- Velcro black shoes with black soles.
- Grey socks or tights.



Year 1 and Year 2

pupil's uniform will be:

- Royal blue round neck jumper or cardigan.
- Grey skirt/pinafore or trousers.
- White polo shirt.
- Grey socks or tights.



Years 3/4/5/6

pupil's uniform will be:

- Royal blue V neck jumper or cardigan.
- Grey skirt/pinafore or trousers.
- White shirt.
- School tie.
- Grey socks or tights.



All children from Reception through to year 6 also require a PE kit.

This consists of:

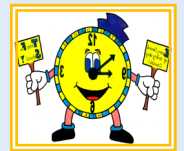
- A white round neck t-shirt.
- Royal blue shorts.
- Royal blue jogging bottoms and Sweatshirt can also be worn.
- Black pumps or black trainers only.



Exceptions can only be made if you have contacted school in advance.



Attendance Matters



Whole School Target: 97% -

This week's Whole school attendance: 89.2%

Absence—if your child is absent from school you **MUST** contact the school before 9:00am each day of your child's absence. Failure to make any contact with the school will result in a home visit from staff and Head teacher.

Appointments—should be arranged outside of the school day and if this is not possible,

| <u>Class</u> | <u>Attendance %</u> | <u>Position</u> |
|--------------|---------------------|-----------------|
| Russia | 98% | 1st |
| Costa Rica | 94.3% | 2nd |
| Germany | 93% | 3rd |
| Australia | 92.6% | 4th |
| Kenya | 92.1% | 5th |
| China | 91.9% | 6th |
| Morocco | 91.4% | 7th |
| Japan | 90% | 8th |
| France | 89% | 9th |
| Ladybirds | 89% | 9th |
| Butterflies | 87.3% | 11th |
| Caterpillars | 86.6% | 12th |
| New Zealand | 83% | 13th |
| India | 83% | 13th |
| Chile | 77% | 15th |

Perfect Attendance



EYFS/ KS1 Germany



KS2 Russia

TEAM

Stars of the Week

Class

Name

| | |
|--------------|---------------------|
| Caterpillars | Archie G & Arav RSP |
| Butterflies | Ruhi A |
| Ladybirds | Ruby-Rae C |
| France | Kareem A |
| Germany | Wealth A |
| Australia | Riley HS |
| New Zealand | Eram A |
| Kenya | Phoebe P |
| Morocco | Maddison Mae J |
| Chile | Elona E |
| Costa Rica | James G |
| India | Thor LDV |
| Russia | Lois VI |
| China | Jerry A |
| Japan | Zephaniah O |

[100%]

To the **296** children
who had **100%**
attendance this
week.



Congratulations!

Classes
Germany
and
Russia

who are our Attendance winners this week.

Congratulations!



Class Assembly Dates;

Morocco - Monday 29th January @ 3:00pm

New Zealand - Monday 5th February @ 3:00pm

Australia - Monday 26th February @ 3:00pm

France - Monday 4th March @ 3:00pm

Germany - Monday 11th March @ 3:00pm

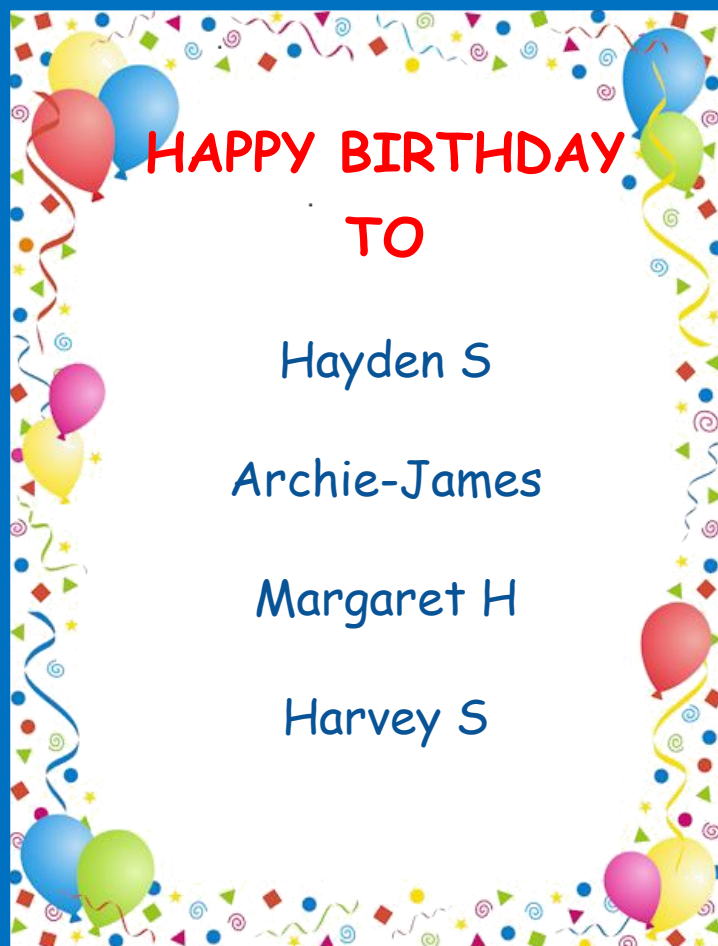
Butterflies - Monday 18th March @ 3:00pm

Ladybirds - Monday 25th March @ 3:00pm

Caterpillars - Monday 25th March @ 3:00pm - In Nursery

&

Wednesday 27th March @ 3:00pm - In Nursery



PE TIMETABLE

Monday:
New Zealand
Year 4 swimming

Tuesday:
Australia
Year 5

Wednesday:
France
Year 6

Thursday:
Germany

Friday:
Year 3

All children must wear their PE kit to



After School Clubs

| | <u>Key Stage 1</u> | <u>Key Stage 2</u> |
|-------------|--|---|
| <u>Mon</u> | Yogabugs | Grammer Club Yr6 Choir Club |
| <u>Tue</u> | | Morning Maths Club Yr6 Spanish Lunchtime club Yr5 Digital Video Editing Yr6 |
| <u>Wed</u> | Reading & Craft Club Yr1 & 2 Arts & Craft Reception/FS2 | Reading Club Yr6 |
| <u>Thur</u> | | Morning Maths Club Yr6 Homework Club Yr6 Art Club Yr3/4 |
| <u>Fri</u> | Multi Sports Club | |

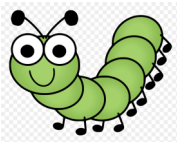
Are You Worried about a child or young person?

If a child or young person is at risk of harm, abuse or neglect please report it to :

CARELINE

Call 0151 233 3700





Nursery's Busy Week



Nursery have had lots of fun settling back into routines and welcoming lots of new friends. We were very grateful to see lots of familiar faces at our mathematics workshops this week, where parents/carers came to play and explore different maths activities.





NORTH LIVERPOOL ACADEMY




ENGLISH LANGUAGE LESSONS

North Liverpool Academy and University of Liverpool are offering FREE English Language lessons to our parents.

“Conversational confidence - developing your ability to speak to other people.”



For more information, please contact the EAL Coordinator on r.bailey@northliverpoolacademy.co.uk
By Friday 26th January

The Liverpool ASD Training Team are providing a series of Virtual Group Drop in advisory sessions via zoom.

They are for parents/carers who have any questions or concerns about their child, regarding social communication difficulties, waiting an ASD assessment or your child has a diagnosis of autism. It is also an opportunity to speak with an ASD trainer and other parents.

The sessions will be one half hours long, you can choose to join anytime with in the time slot or stay for the duration.

You do not require a diagnosis to book your place.

Date: February 2024 dates and Times (am / pm sessions)

| Dates | Morning Session | Afternoon Session |
|----------------------|-----------------|-------------------|
| 6 th Feb | X | 1pm – 2.30pm |
| 8 th Feb | X | 1pm – 2.30pm |
| 9 th Feb | X | 1pm – 2.30pm |
| 13 th Feb | X | 1pm – 2.30pm |
| 14 th Feb | X | 1pm – 2.30pm |
| 15 th Feb | X | 1pm – 2.30pm |
| 16 th Feb | X | 1pm – 2.30pm |
| 27 th Feb | X | 1pm – 2.30pm |
| 28 th Feb | X | 1pm – 2.30pm |

If you would like to book onto one of the sessions, please

email: asdtrainingteam@liverpool.gov.uk



Winter Edition
Liverpool Parenting
Newsletter January -
March 2024

Diary Dates

Number Day 2024

Friday 2nd February, school will be taking part in the NSPCC Number Day. Pupils can attend school in their own clothes or clothes that have numbers on them. In class, pupils will take part in an Active Maths session. Collection buckets will be on the yard and all money col-

Crisis Care line

*Families/Professionals can call: 0151 293 3577 or 0151 282 4724 or freephone 0808 196 3550. Email: CrisisCare@alderhey.nhs.uk

*General enquiries: 0151 293 3662

SHOUT (Alder Hey) A free, confidential, 24/7 text message support service for anyone who is feeling overwhelmed or is struggling to cope.

To start a conversation text the word **GREEN** to 85258

More info here: <https://www.liverpoolcamhs.com/reach-out/>

YPAS Crisis Face to Face Drop-Ins

YPAS North & South Hubs 9-8pm every Mon-Thurs

YPAS Central Hub 9-8pm every Mon-Thurs, 9-6pm Fri and 12-4pm Sat



**EVERYWHERE YOU GO IS A CHANCE
TO CHANGE THE WORLD!
ONE SMILE, ONE HUG,
ONE ACT OF KINDNESS
CAN MAKE THE WORLD
OF A DIFFERENCE TO SOMEONE!**

Karen Salmonson



notsalmon.com